



# QUESTIONS & ANSWERS



GRAB 020537 8



### What types of products and services does Scholle A2B™ offer?

Scholle A2B is a fully-integrated service provider that designs logistics solutions tailored to your specific needs. We'll package your cargo and move it from A2B, safe in the knowledge that the global leader in flexible liquid packaging is taking care of your product. If you import or export bulk and semi-bulk liquid consignments then you should speak to us about our range of packaging options and logistics capabilities. We offer a range of pack sizes from 3L through 24,000L, including 200L drum and 1000L IBC (Intermediate Bulk Container) for maximum flexibility.



### Why partner with Scholle A2B?

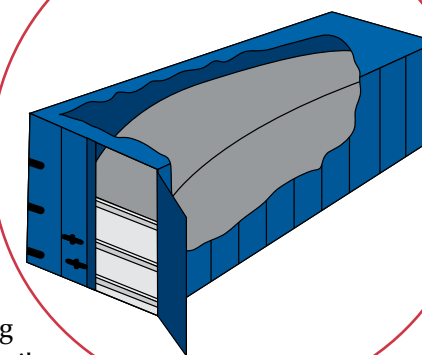
What is the most important element in taking proper care of your product? It's the packaging of course. Scholle has been the global leader in the bag-in-box (BIB) packaging format for over 50 years, with over fifteen years manufacturing experience in Flexitanks. We are the only company in the liquid logistics business today that fully understands the technology and quality impact in bulk shipment. You can rely on Scholle A2B to take appropriate care of your consignment through the supply chain.

### Which trade lanes does Scholle service?

Scholle is a multi-national corporation continuously moving cargos between Australia, North and South America, Europe and Asia.

### What are the environmental benefits of bulk packaging?

Bulk packaging uses less energy and natural resources per unit volume than any other packaging format. Environmental impact is minimized in the inbound and outbound logistics loops.



### What is a Flexitank?

A Flexitank is a flexible polymer bladder or inner liner that is fitted into a standard 20' shipping container. The Flexitank temporarily converts a dry cargo container into a bulk liquid shipping unit, allowing for maximum economy in containerized shipping.

### Why use a Flexitank?

Flexitanks represent an economical method of transporting non-hazardous liquid cargos between countries. Available in capacities between 16,000L and 24,000L, these units are designed to optimize the payload capabilities of regular 20' shipping containers. Flexitanks can be used as a substitute for steel ISO tankers and have the following advantages:

- No repairs or inspections necessary
- No cleaning costs
- No cross contamination risks
- No return costs
- No demurrage
- New unit every time
- Pressure tested and certified by inspectors before shipping

### What type of Flexitank should I use?

There are two types of Flexitanks; single-ply and multi-layer. Multi-layer Flexitanks are the cheapest and most common format. Oxygen barrier is usually improved by the addition of a sheet of barrier material into the multi-ply structure.

Single-ply Flexitanks are made from a single three-layer coextruded film. Scholle Flexitanks have the added advantage of having incorporated barrier technology, rather than external barrier material sleeves.

Scholle A2B recommends the use of single-ply Flexitanks. Container and Flexitank damage risks are lower than with multi-layer Flexitanks, and oxygen barrier performance is superior.

### CAN I USE A FLEXITANK?

Flexitanks are used to carry a wide variety of liquid products, including food and beverage items and industrial compounds. Only non-hazardous liquid products are allowed in this package format; including, but not limited to:

- BASE OIL
- CHEMICALS
- COCONUT OIL
- CORN SWEETENER
- CORN SYRUP
- DETERGENTS
- DRILLING FLUIDS
- EDIBLE OILS
- EMULSIONS
- FRUCTOSE
- FRUIT JUICE CONCENTRATE
- GLYCERIN
- LIQUID SUGAR
- LUBRICANTS
- MALT EXTRACTS
- NATURAL LATEX
- PALM OIL
- PARAFFIN WAX
- PHARMACEUTICALS
- PLASTICISERS
- POTABLE WATER
- PRINTING INK
- SORBITOL
- SYNTHETIC LATEX
- TALLOW
- TRANSFORMER OIL
- VEGETABLE PASTE
- WAXES
- WHITE OIL
- WINE

Please consult a knowledgeable Scholle A2B representative about any product you plan to ship via Flexitank.

## What about oxygen barrier?

The base material in all Flexitanks is polyethylene which itself has poor gas barrier properties. Improvements can be made by using EVOH (Ethyl Vinyl Alcohol), aluminium foil or metallized films incorporated into the construction of the Flexitank. Barrier materials such as EVOH are sensitive to moisture, leading to variable performance under changing atmospheric conditions, and ideally they should not serve as external sleeves fitted to Flexitanks. Metal foils and laminates suffer rapid barrier performance degradation as they flex and move about in handling and transit.

The most effective way to achieve good oxygen barrier is to use barrier compounds designed to flex and move, and to fully incorporate the barrier material into a robust film protecting it from the atmosphere. This combination provides consistent and sustained barrier performance over time. Scholle's proprietary Flexitank barrier technology is the best protection you can give your product.

## Why should I insist on using single-ply Flexitanks as opposed to multi-layer Flexitanks?

Multi-layer Flexitanks led the industry for many years, and are still in widespread use today. There is a growing trend for responsible industry players to adopt single-ply Flexitanks since there are clear benefits, including shipping equipment integrity and package disposal.

In the case of Scholle A2B's premium barrier Flexitank you can now choose the strength and environmental benefits of single-ply Flexitanks without compromising the protection of your liquid cargo.

## What is "taint" and how can it be avoided?

"Taint" is the generic term given to product spoilage occurring as a result of taste contamination. Taint may be caused by a number of compounds. Most typically, these are large, complex organic molecules which may be detectable to the taster in concentrations measured in parts-per-billion. Therefore a very small amount of contaminant could potentially spoil a full Flexitank consignment. Taint related incidents in the bulk liquid shipping business are relatively rare, however there are only two methods of mitigating this risk:

**A: Adopting operations excellence** - Scholle's full and proper container inspection and selection eliminates unsuitable containers prior to use. Containers with heavy odours of any kind or wet floors with obvious spillage in prior journeys are rejected prior to use.

**B: Using premium barrier packaging** - Scholle's leading-edge bulk packaging reduces the risk of unwanted odours contaminating your products.

## What certifications do your packages carry?

Scholle's premium packages undergo rigorous testing and certification before they are offered to clients. Currently, all our package options are FDA, EU and Kosher-certified. Contact us today for more information about all our testing methods.



## GET MOVING WITH SCHOLLE A2B:

### ASIA-PACIFIC

Hewittson Road

Elizabeth West

South Australia, 5113

Tel: +61 8.8255.4366

Email: A2B@Scholle.com

Web: www.MoveForwardA2B.com

### EUROPE/MIDDLE-EAST/AFRICA

Minervum 7081

4817 ZK Breda

The Netherlands

Tel: +31 0.76.544.4500

Email: A2B@Scholle.com

Web: www.MoveForwardA2B.com

### LATIN AMERICA

Av. Fernando Piccinini, 700

Distrito Industrial

Vinhedo-SP, 13800-000 Brazil

Tel: +55 19.3826.8800

Email: A2B@Scholle.com

Web: www.MoveForwardA2B.com

### NORTH AMERICA

200 West North Avenue

Northlake, IL 60164 USA

Toll Free: 1.888.BAG.N.BOX

Tel: +1 708.562.7290

Email: A2B@Scholle.com

Web: www.MoveForwardA2B.com